



ENTERPRISE PRODUCTS PARTNERS L.P.

# MIDLAND TO ECHO 4 CRUDE OIL & CONDENSATE PIPELINE PROJECT

*SEPTEMBER 2019*

EPD  
LISTED  
NYSE

107



## ENTERPRISE OVERVIEW

---

- Enterprise (“EPD”) is one of the largest U.S. publicly traded integrated midstream energy systems
- Midstream infrastructure serving producers and consumers of natural gas, NGLs, crude oil, petrochemicals and refined products
- Since its IPO in 1998, EPD has built \$42 billion of midstream infrastructure
- Many people have jobs because of EPD
  - ≈7,000 employees
  - ≈1,000 independent contractors
- EPD has built ≈6,000 miles of pipeline since 2010 in 12 different states, 4,200 miles of which has been in Texas



# NEW MIDLAND TO ECHO PIPELINE

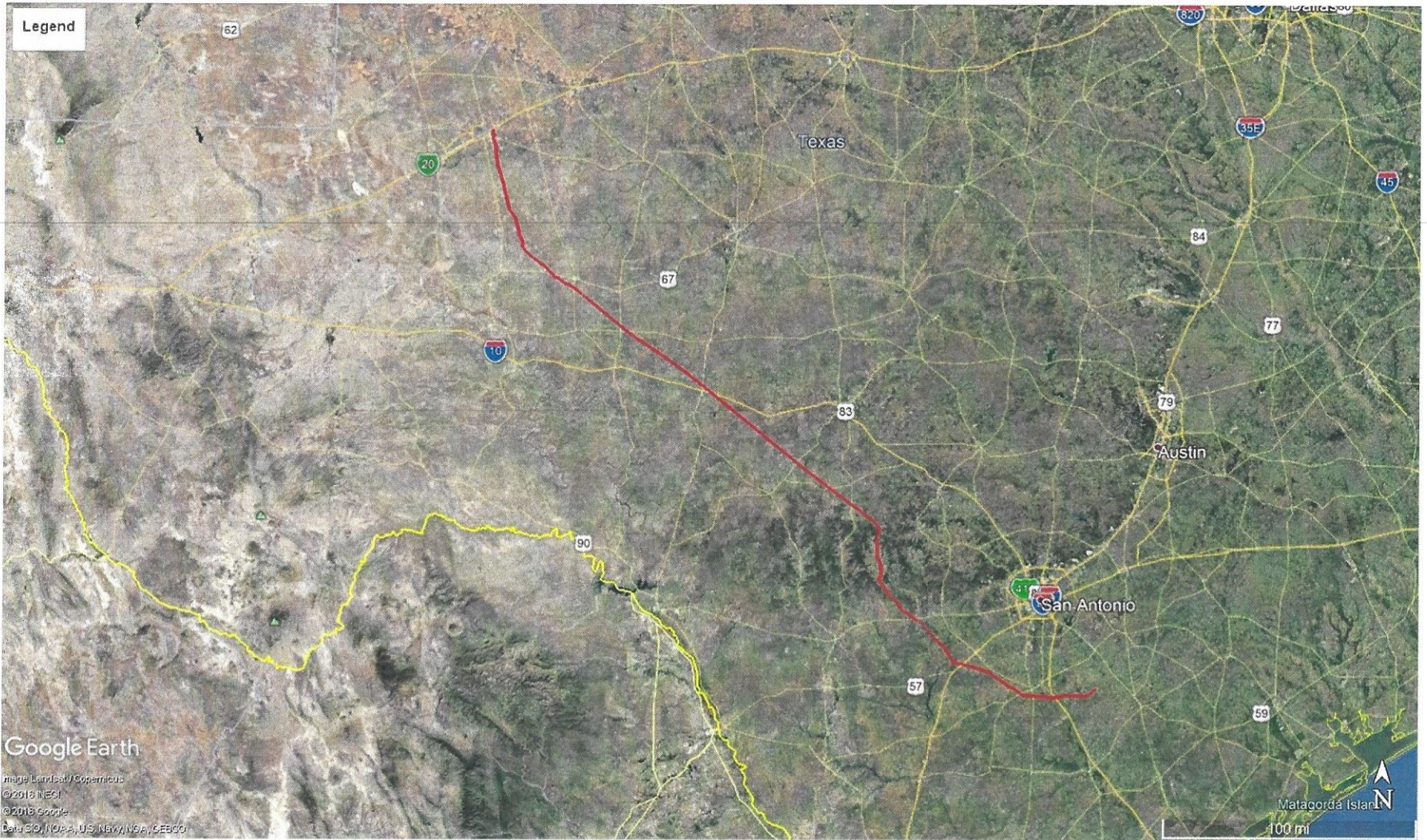
## *Project Overview*

---

- 30" new-build pipeline
- Texas RRC Classification: Common Carrier
- Pipeline route
  - Co-locating and routing to avoid population centers
- Expected in-service: 1H 2021



# NEW MIDLAND TO ECHO PIPELINE





## SAFETY & ENVIRONMENT

---

- Subject to extensive State and Federal regulation and oversight
- Design of pipeline and pump stations meet or exceeds Best Industry Standards and Practices
- Operations monitored 24/7 from Enterprise's state-of-the-art Control Center
- The company will perform all the required environmental surveys and assessments, including delineations of waters of the United States, cultural resources, karst resources and federally listed threatened / endangered species and their habitats





# NEW MIDLAND TO ECHO PIPELINE

## *Project Benefits for Texas*

- The Permian Basin is one of the world's most prolific basins. Crude oil production is expected to approximately double from nearly 4 MMBPD to 8 MMBPD by 2025.
  - The basin's resources include significant amounts of crude oil, natural gas and natural gas liquids
- Pipelines are the safest and most efficient way to transport the liquid petroleum and natural gas that millions of Americans rely on for their very way of life
- Oil and natural gas has played a critical role in building Texas' resilient and vibrant economy, and it continues to keep our energy prices affordable and reliable today
- New Midland to ECHO Pipeline effectively replaces ≈2,500 tanker trucks on the road per day
  - Takes traffic off roads, reduces emissions, and takes stress off communities to accommodate these large loads

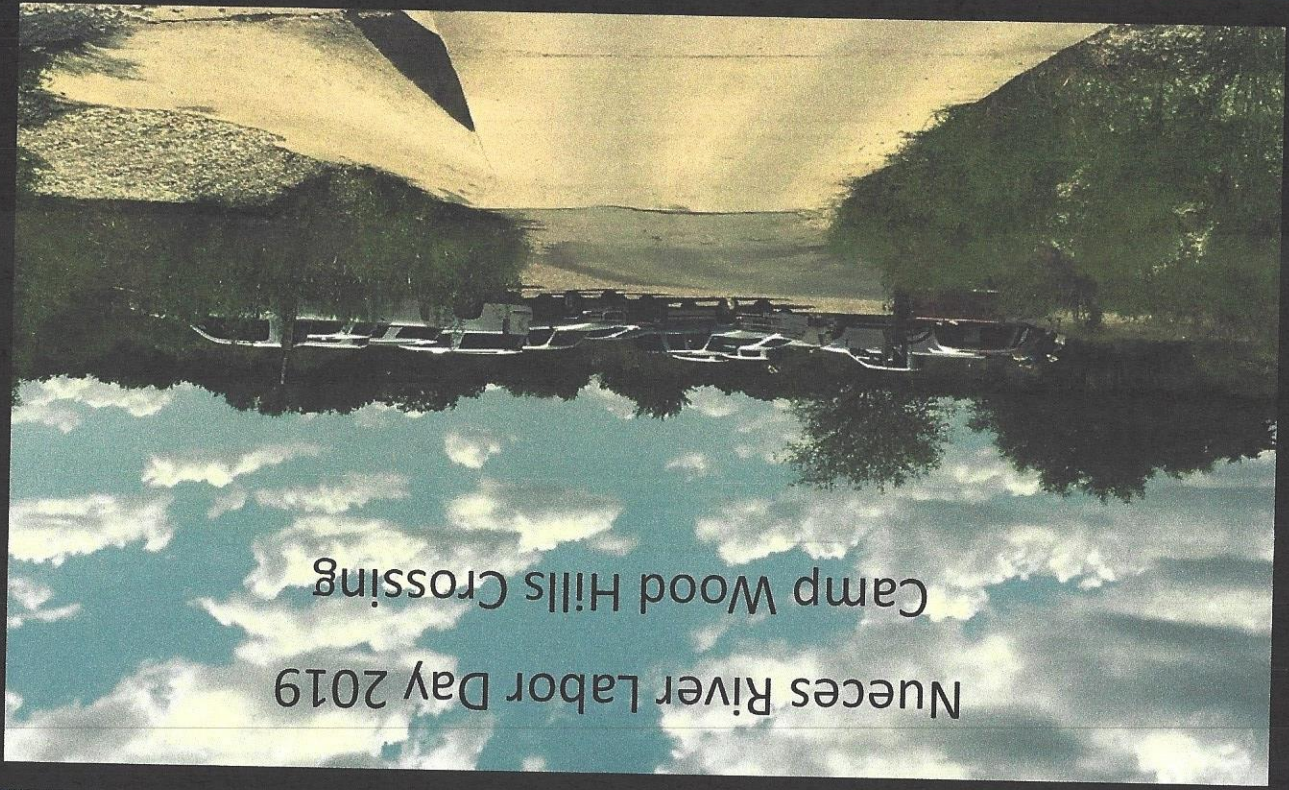


# FORWARD-LOOKING STATEMENTS

This presentation contains forward-looking statements based on the beliefs of the company, as well as assumptions made by, and information currently available to our management team. When used in this presentation, words such as “anticipate,” “project,” “expect,” “plan,” “seek,” “goal,” “estimate,” “forecast,” “intend,” “could,” “should,” “will,” “believe,” “may,” “potential” and similar expressions and statements regarding our plans and objectives for future operations, are intended to identify forward-looking statements.

Although management believes that the expectations reflected in such forward-looking statements are reasonable, it can give no assurance that such expectations will prove to be correct. You should not put undue reliance on any forward-looking statements, which speak only as of their dates. Forward-looking statements are subject to risks and uncertainties that may cause actual results to differ materially from those expected, including insufficient cash from operations, adverse market conditions, governmental regulations, the possibility that tax or other costs or difficulties related thereto will be greater than expected, the impact of competition and other risk factors discussed in our latest filings with the Securities and Exchange Commission.

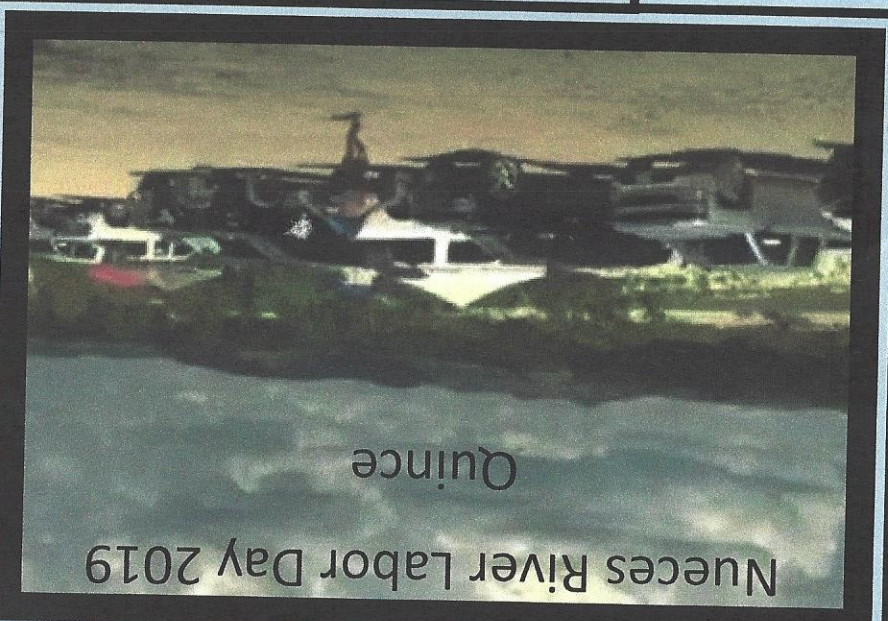
All forward-looking statements attributable to Enterprise or any person acting on our behalf are expressly qualified in their entirety by the cautionary statements contained herein, in such filings and in our future periodic reports filed with the Securities and Exchange Commission. Except as required by law, we do not intend to update or revise our forward-looking statements, whether as a result of new information, future events or otherwise.



Nueces River Labor Day 2019  
Camp Wood Hills Crossing



No Parking



Nueces River Labor Day 2019  
Quince