

Bexar County Influenza Surveillance Report, 2017-2018 Season; 2018 MMWR Week 4

(Jan. 21 – Jan. 27, 2018)

Summary

Influenza activity remains high across San Antonio and Bexar County. Compared to the previous week, the percentage of patient visits due to influenza-like illness (ILI) has increased, and the percentage of specimens testing positive for influenza reported by public health and hospital laboratories has decreased. No influenza-associated pediatric deaths were reported this week. Two ILI or influenza-associated outbreaks were reported this week; a total of 16 have been reported this season.

Table 1: Summary of Recent Bexar County Influenza and Influenza-like Illness (ILI) Activity

	Percent Change from Previous Week	Current Week 4	Previous Week 3	Data Cumulative since October 1, 2017 (Week 40)
Percentage of specimens positive for influenza by hospitals and public health laboratory	↓4.3%	38.0	39.7	23
Percentage of visits due to ILI [†]	↑13.5%	11.8	10.4	6.06
Number of variant/novel influenza infections	No change	0	0	0
Number of pediatric influenza deaths	No change	0	0	1
Influenza activity code	-	Widespread	Widespread	-

Note: Data included in this table have been updated since last week's flu report with any new reports received.

[†]Based on ILINet data

U.S. Outpatient Influenza-like Illness Surveillance Network (ILINet)

Information on patient visits to health care providers for influenza-like illness is collected through Bexar County. Health care providers voluntarily report this information to ILINet.

Figure 1: Percentage of Visits Due to ILI Reported by Bexar County ILINet Participants 2014-2018 Seasons

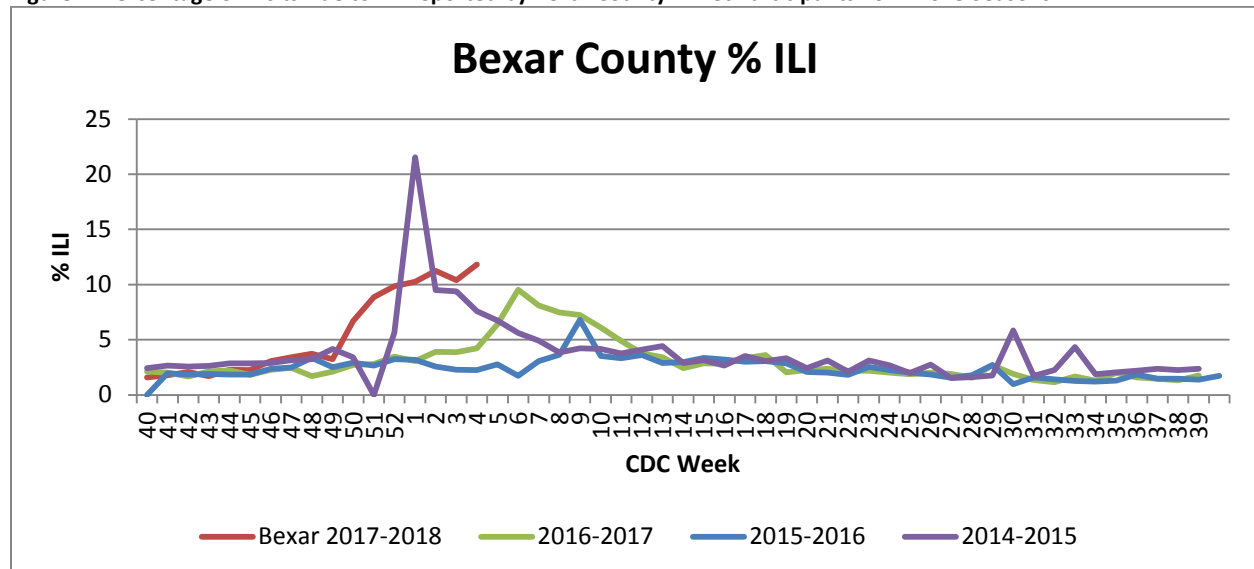
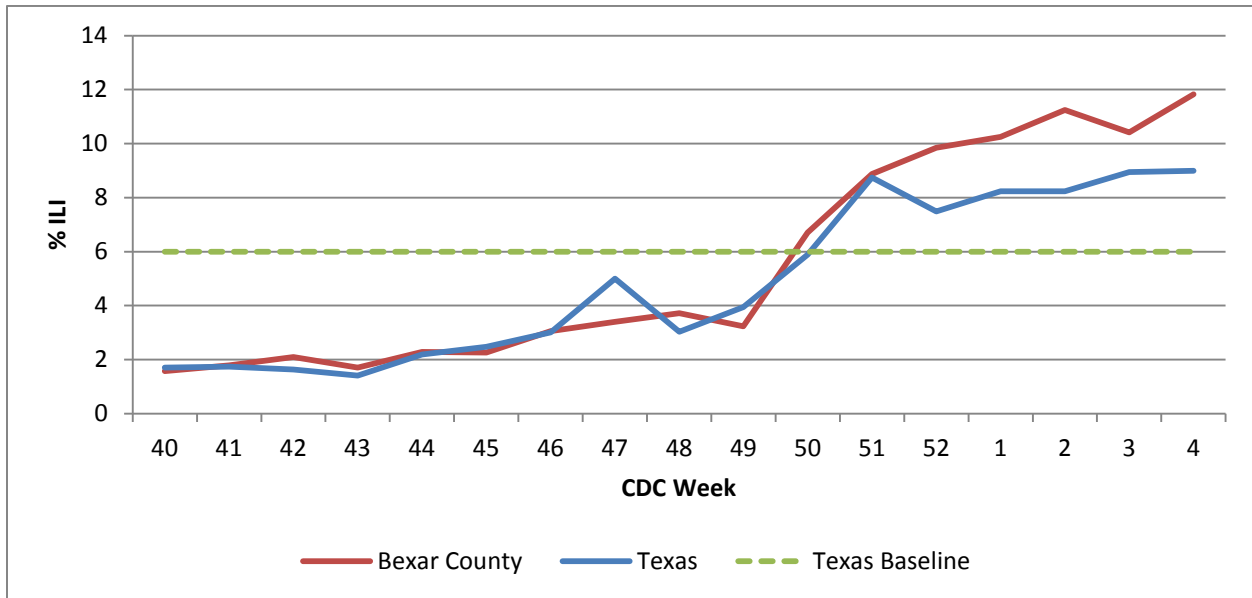


Figure 2: Percentage of Visits Due to ILI Reported by ILINet Participants, Texas and Bexar County, 2017-2018



Laboratory Results

Hospital and Public Health Laboratory Testing

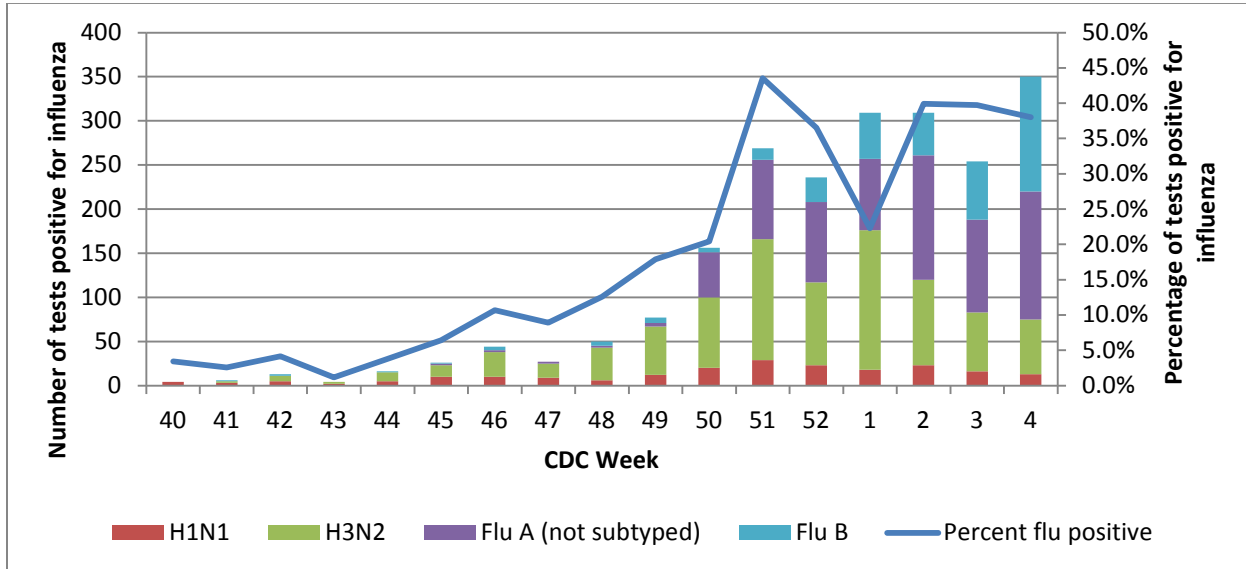
Hospital laboratories voluntarily report influenza tests (antigen, culture, and PCR) to the National Respiratory and Enteric Virus Surveillance System (NREVSS). Providers throughout Bexar County also submit specimens for influenza testing (PCR) to the San Antonio Metropolitan Health District’s (Metro Health) public health laboratory. The results reported by Texas NREVSS participants and Metro Health for the current week are summarized in the table below.

Table 2: Influenza testing performed in Bexar County for the Current and Previous Week

	Current Week 4	Previous Week 3	Cumulative since October 1, 2017 (Week 40)
Number of specimens tested	923	639	11,352
Number of positive specimens	351 (38%)	254 (39.7%)	2,608 (23%)
Positive specimens by type/subtype (n, %)			
Influenza Type A	220 (62.7%)	188 (74%)	2,185 (83.8%)
Subtyping performed	75 (34.1%)	83 (44.1%)	1,072 (49.1%)
H1N1	13 (17.3%)	16 (19.3%)	208 (19.4%)
H3N2	62 (82.7%)	67 (80.7%)	864 (80.6%)
Subtyping not performed	145 (65.9%)	105 (55.9%)	1113 (50.9%)
Influenza Type B	130 (37%)	66 (26%)	422 (16.2%)

Note: Data included in this table is voluntarily submitted weekly via NREVSS and Metro Health laboratory

Figure 3: Number and Percentage of PCR Tests Positive for Influenza by Type and Subtype, Bexar County, 2017-2018



Sentinel Provider Laboratory Testing

Providers throughout Bexar County also submit test results from influenza rapid testing to the San Antonio Metropolitan Health District on a voluntary basis. These sites are recruited to send this information on a weekly basis. The results from the participating providers are summarized in the table below (Table 3).

Table 3: Influenza testing performed by Bexar County Sentinel Providers

	Current Week 4	Previous Week 3	Cumulative since October 1, 2017 (Week 40)
Number of providers reporting flu tests	12	12	-
Number of positive specimens	915	741	4971
Positive specimens by type/subtype (n, %)			
Influenza Type A	589 (64.4%)	530 (71.5%)	3973 (79.9%)
Subtyping performed	63 (10.7%)	77 (14.5%)	928 (23.4%)
H1N1	13 (20.6%)	14 (18.2%)	194 (20.9%)
H3N2	50 (79.4%)	63 (81.8%)	734 (79.1%)
Subtyping not performed	145 (15.8%)	103 (19.4)	715 (18%)
Influenza Type B	326 (35.6%)	211 (28.5%)	998 (20.1%)

Note: Data included in this table is voluntarily submitted weekly by our sentinel flu providers. This data may not be comparable to previous flu seasons because providers vary by year.

P&I Mortality Surveillance Data

Pneumonia and influenza (P&I) death data are obtained from death certificates of Bexar County residents whose underlying or contributing cause(s) of death is reported as pneumonia or influenza.

Table 4: Bexar County P&I Deaths Occurring October 1, 2017- January 27, 2018 by Age Group

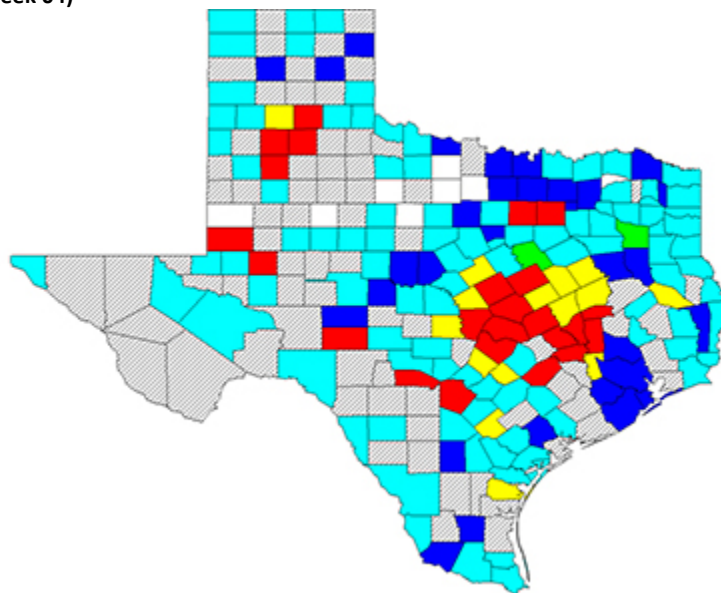
Age Category (years)	Number of P&I Deaths ⁺
0-4	<10
5-17	0
18-49	29
50-64	74
65+	291

Note: Data are provisional and subject to change, errors, and duplicates

⁺If cell count is less than 10, the number of P&I deaths is suppressed and <10 is written in the cell

Statewide Influenza Activity Map

Figure 4: Texas Map Displaying the Highest Level of Influenza or ILI Activity Reported by County for the Week Ending Jan. 27, 2018 (MMWR Week 04)



County Influenza Activity Level	
	No information / no reporters
	No activity
	Influenza-like illness only (no laboratory confirmation)
	Rapid test positive flu
	Flu A (confirmed by culture or PCR)
	Flu B (confirmed by culture or PCR)
	Flu A and B (confirmed by culture or PCR)

Note: The majority of influenza cases are not reportable by law in Texas. This map contains data from sentinel sites and only displays influenza and ILI cases that were reported to public health. Positive laboratory results are reported according to specimen collection date, or date received in the laboratory if the former is unknown.

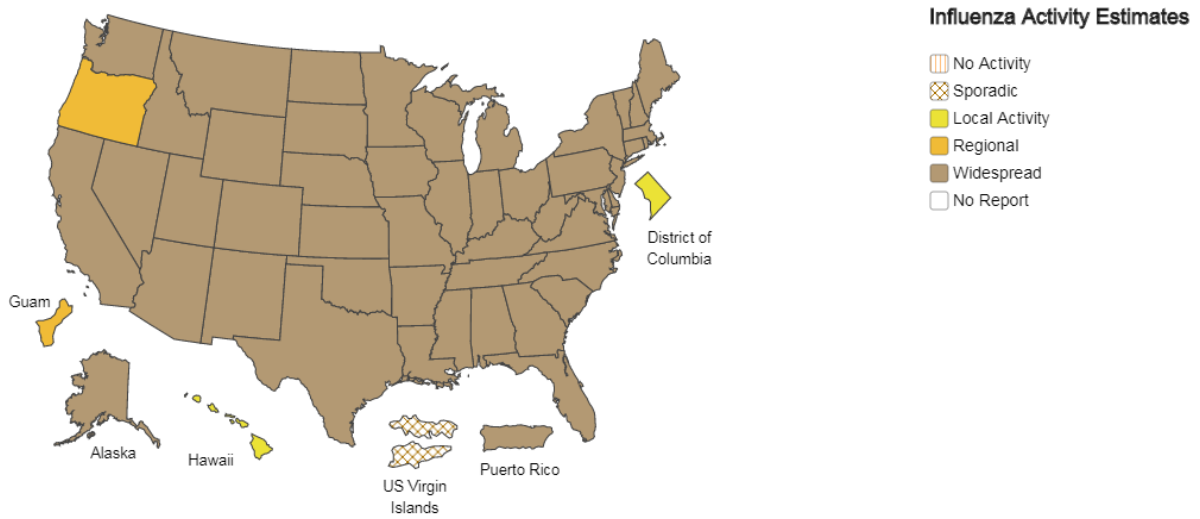
Source: <http://www.dshs.state.tx.us/idcu/disease/influenza/surveillance/>

Nationwide Influenza Activity Map

Figure 5: US Influenza Activity Estimates

Weekly Influenza Activity Estimates Reported by State and Territorial Epidemiologists*

Week Ending Jan 27, 2018 - Week 4



*This map indicates geographic spread and does not measure the severity of influenza activity.

Source: <https://www.cdc.gov/flu/weekly/usmap.htm>